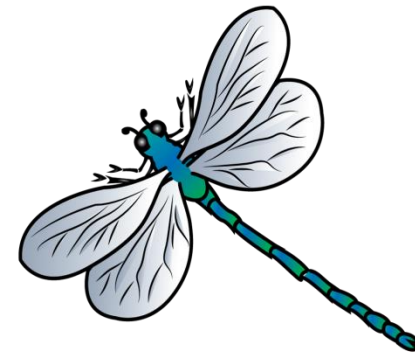
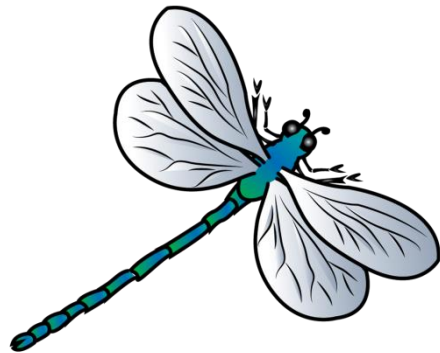


Class One Home Learning

Tuesday 14th July



English



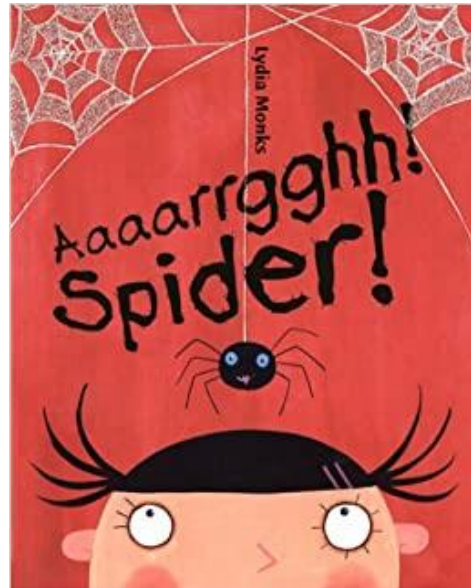
I hope you enjoyed reading and discussing the story yesterday. I noticed that there are a lot of exclamation marks in the story but no question marks.

Today I would like you to write some questions about the story. Here's my first question: *How did the spider get into the house?* Write your questions in your home learning book.

When?

Who?

Where?



What?

How?

Why?

English - SPAG



Today I would like you to learn about plurals. A plural means there is more than one of something.

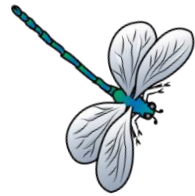
There are two cats.

We have three toothbrushes.

Use this video on Espresso to help you learn:

https://central.espresso.co.uk/espresso/primary_uk/subject/module/video/item910810/grade1/module910304/collection910301/section910915/index.html?source=search-all-all-all&source-keywords= plurals





Maths – True or False?




Today I have chosen: telling the time

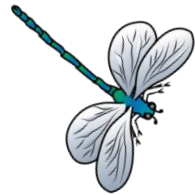
True or False?

Time to the half hour

The clock shows half past 6



White Rose Maths




Maths – True or False?



True or False?

Time to the half hour

False

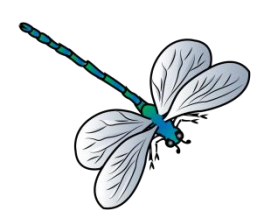


The first clock shows half past 5 because the hour hand is half way between 5 and 6

The second clock shows half past 6

White Rose

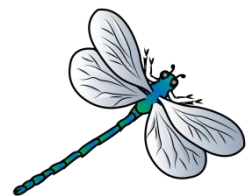
The White Rose Maths lessons this week are about telling the time.
Please make use of them if your child needs more teaching.



Maths

We are continuing
with the Peter
Rabbit maths
mystery all week.

Today's clue:





Clue 2

Check the answers to these maths problems.

If there are more true calculations, the beetroot burglar is a girl.

If there are more false calculations, the beetroot burglar is a boy.



	True 	False 
$15 + 3 = 19$		
$34 + 4 = 38$		
$25 - 3 = 22$		
Double 7 is 13		
Half of 20 is 10		
$60 + 30 = 100$		
$65 - 7 = 58$		
$4 \times 5 = 24$		
$10 \div 2 = 6$		
Total		



Answer to clue 2:

The beetroot burglar is a _____.